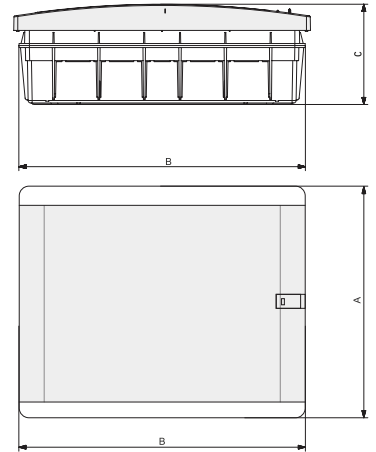
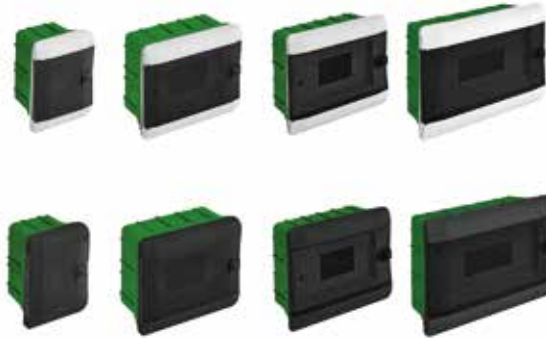


## FICHE TECHNIQUE

### Coffret Électrique Encastrable



## Caractéristiques Techniques

REFERENCE	DESCRIPTION	A	B	C	POIDS	CARTON
2GE-01020X-002	01-02	140mm	100mm	96mm	0.3 KG	50
2GE-01020X-004	03-04	140mm	136mm	96mm	0.3 KG	30
2GE-01020X-006	06	140mm	172mm	96mm	0.3 KG	30
2GE-01020X-008	08	210mm	170mm	96mm	0.41 KG	20
2GE-01020X-012	12	208mm	284mm	103mm	0.62 KG	16
2GE-01020X-016	16	290mm	230mm	103mm	0.75 KG	16
2GE-01020X-024	24	327mm	300mm	104mm	1.1 KG	8
2GE-01020X-036	36	441mm	370mm	107mm	1.6 KG	5

